

## Rabbit anti-stickleback Vtg Polyclonal antibody, GA-306

### General description

This product consists of rabbit polyclonal antibodies (affinity-purified IgG fraction) against vitellogenin from three-spined stickleback (*Gasterosteus aculeatus*).  
Immunogen source: Vitellogenin purified from whole body homogenate of 17 $\beta$ -estradiol treated three-spined stickleback (*Gasterosteus aculeatus*).

### Specificity

The polyclonal antibody GA-306 binds with high affinity to vitellogenin in plasma samples from three-spined stickleback (*Gasterosteus aculeatus*). The antibody also cross-reacts with vitellogenin from rainbow trout (*Oncorhynchus mykiss*), tilapia (*Oreochromis niloticus*), sheepshead minnow (*Cyprinodon variegatus*), cod (*Gadus morhua*), turbot (*Scophthalmus maximus*) and ballan wrasse (*Labrus bergylta*). The degree of cross-reactivity differs between species and with the methods employed.

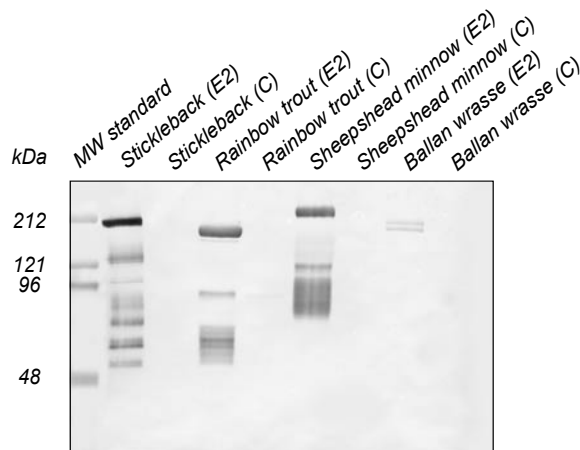
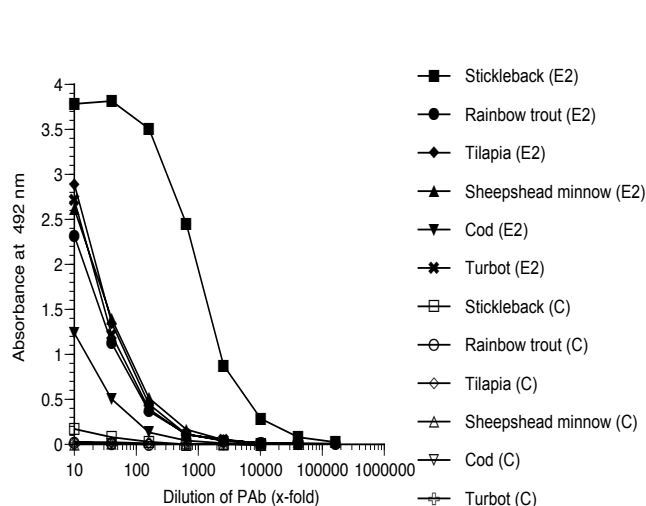
### Applications

The polyclonal antibody GA-306 works well in both ELISA and western blot for a number of fish species. Since assay conditions vary, the optimum dilution should be determined for each particular application. *Note:* The antibody is dissolved in a buffer containing BSA, and is therefore not recommended to use for coating.

Normal dilution range:

ELISA: 1:100 - 1:1000

Western blot: 1:100 - 1:1000



### ELISA

Coating: Plasma (diluted 1:1000) from 17 $\beta$ -estradiol treated (E2) or control (C) fish.

Primary antibody: GA-306

### Western blot

Samples: Plasma (1:200, 10  $\mu$ l/well) from 17 $\beta$ -estradiol treated (E2) or control (C) fish.

Primary antibody: GA-306 diluted 1:500