

## Rabbit anti-turbot Vtg Polyclonal antibody, CS-2

### General description

This product consists of rabbit polyclonal antibodies (affinity-purified IgG fraction) against vitellogenin from turbot (*Scophthalmus maximus*).

Immunogen source: Vitellogenin purified from plasma of 17 $\beta$ -estradiol treated turbot (*Scophthalmus maximus*).

### Specificity

The polyclonal antibody CS-2 binds with high affinity to vitellogenin in plasma samples from turbot (*Scophthalmus maximus*). The antibody also cross-reacts with vitellogenin from flounder (*Platichthys flesus*), halibut (*Hippoglossus hippoglossus*), wrasse (*Ctenolabrus rupestris*), carp (*Cyprinus carpio*) and tilapia (*Oreochromis niloticus*). The degree of cross-reactivity differs between species and with the methods employed.

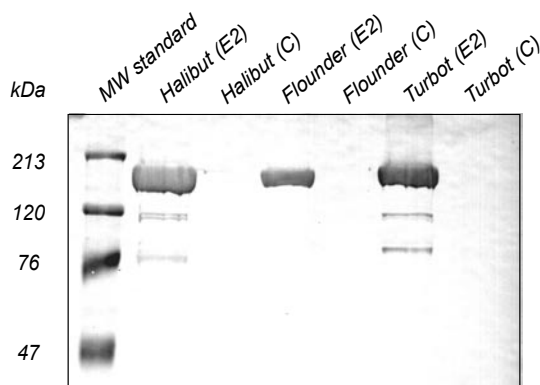
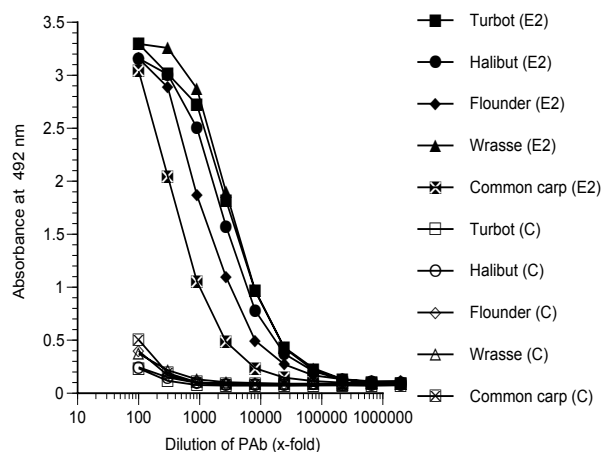
### Applications

The polyclonal antibody CS-2 works well in both ELISA and western blot for a number of species. Since assay conditions vary, the optimum dilution should be determined for each particular application. *Note:* The antibody is dissolved in a buffer containing BSA, and is therefore not recommended to use for coating.

Normal dilution range:

ELISA: 1:500 - 1:3000

Western blot: 1:500 - 1:3000



### ELISA

Coating: Plasma (diluted 1:1000) from 17 $\beta$ -estradiol treated (E2) or control (C) fish.

Primary antibody: CS-2

### Western blot

Samples: Plasma (1:200, 10  $\mu$ l/well) from 17 $\beta$ -estradiol treated (E2) or control (C) fish.

Primary antibody: CS-2 diluted 1:3000