

## Mouse anti-zebrafish Vtg Monoclonal antibody, JE-2A6

### General description

This product consists of affinity-purified mouse monoclonal antibodies against vitellogenin from zebrafish (*Danio rerio*).

Immunogen source: Vitellogenin purified from whole body homogenate of 17 $\beta$ -estradiol treated zebrafish (*Danio rerio*).

Subclass/isotype: IgG<sub>2b</sub>-kappa.

### Specificity

The monoclonal antibody JE-2A6 binds with high affinity to vitellogenin in whole body homogenate samples from zebrafish (*Danio rerio*). The antibody does not cross-react with vitellogenin from the other cyprinid species carp (*Cyprinus carpio*), fathead minnow (*Pimephales promelas*) or roach (*Rutilus rutilus*).

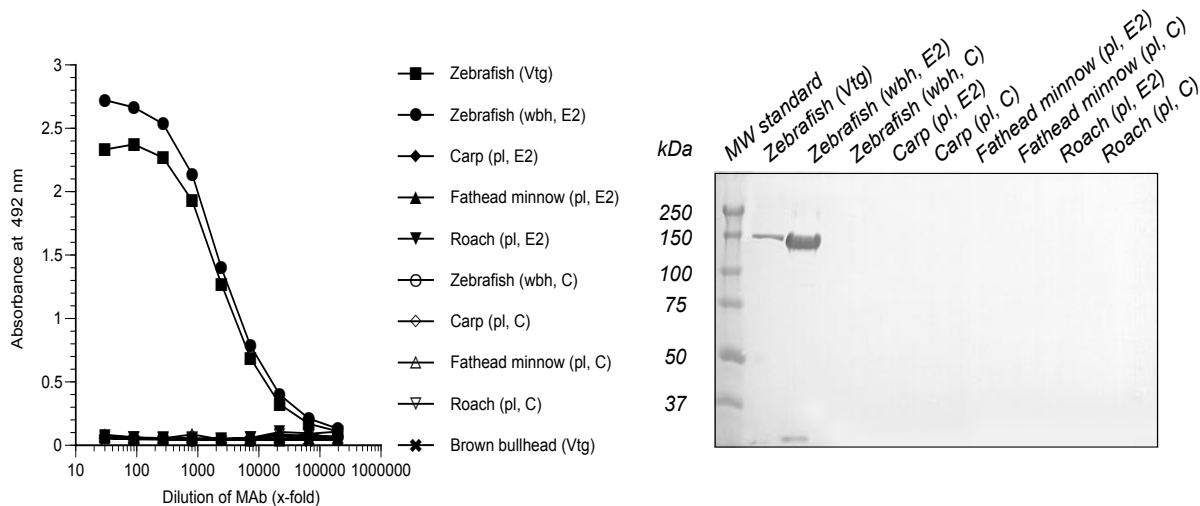
### Applications

The monoclonal antibody JE-2A6 binds specifically to zebrafish vitellogenin in both ELISA and western blot. The antibody also works well in immunohistochemistry. Since assay conditions vary, the optimum dilution should be determined for each particular application. *Note*: The antibody is dissolved in a buffer containing BSA, and is therefore not recommended to use for coating.

Normal dilution range:

ELISA: 1:100 - 1:1000

Western blot: 1:100 - 1:1000



### ELISA

Coating: Whole body homogenate (wbh; 10  $\mu$ g protein/ml) or plasma (pl; diluted 1:1000) from 17 $\beta$ -estradiol treated (E2) or control (C) fish. Purified vitellogenin (Vtg; 2  $\mu$ g/ml).

Primary antibody: JE-2A6

### Western blot

Samples: Whole body homogenate (wbh; 10  $\mu$ g protein/well) or plasma (pl; 1:200, 10  $\mu$ l/well) from 17 $\beta$ -estradiol treated (E2) or control (C) fish. Purified vitellogenin (Vtg; 1  $\mu$ g/well).

Primary antibody: JE-2A6 diluted 1:200