

Rabbit anti-carp Vtg Polyclonal antibody, CT-1

General description

This product consists of rabbit polyclonal antibodies (affinity-purified IgG fraction) against vitellogenin from common carp (*Cyprinus carpio*).

Immunogen source: Vitellogenin purified from plasma of 17 β -estradiol treated common carp (*Cyprinus carpio*).

Specificity

The polyclonal antibody CT-1 binds with high affinity to vitellogenin in plasma samples from common carp (*Cyprinus carpio*). The antibody also cross-reacts with vitellogenin from other cyprinid species, including fathead minnow (*Pimephales promelas*) and zebrafish (*Danio rerio*). The degree of cross-reactivity differs between species and with the methods employed.

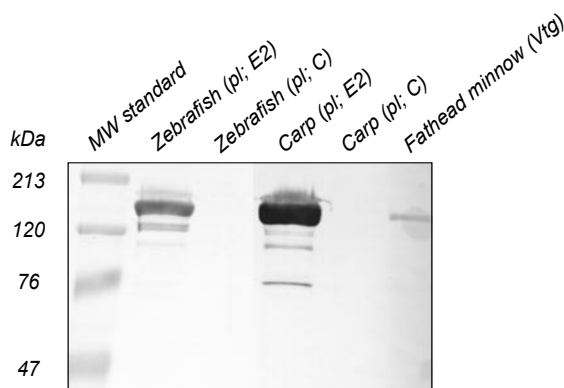
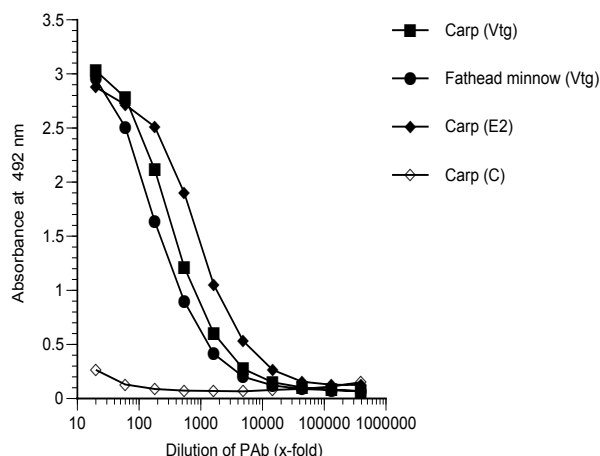
Applications

The polyclonal antibody CT-1 works well in both ELISA and western blot for a number of cyprinid species. Since assay conditions vary, the optimum dilution should be determined for each particular application. *Note:* The antibody is dissolved in a buffer containing BSA, and is therefore not recommended to use for coating.

Normal dilution range:

ELISA: 1:100 - 1:1000

Western blot: 1:250 - 1:1000



ELISA

Coating: Plasma (diluted 1:1000) from 17 β -estradiol treated (E2) or control (C) fish. Purified vitellogenin (Vtg; 200 ng/well).

Primary antibody: CT-1

Western blot

Samples: Purified vitellogenin (Vtg; 160 ng/well) or plasma (pl; 1:200, 10 μ l/well) from 17 β -estradiol treated (E2) or control (C) fish.

Primary antibody: CT-1 diluted 1:1000