

**The kit (96 tests)**, a microtiter plate format, enables the simultaneous measurement of multiple samples at a reasonable cost.

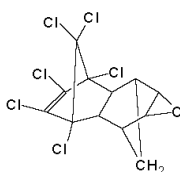
**The assay range** is between 0.25 ppb and 25.0 ppb. This assay allows the determination of cyclodienes in a range of environmental samples (water, soil, sediments, fish plasma, etc.).

**Direct sample.** No time-consuming sample extraction or the use of hazardous organic solvents.

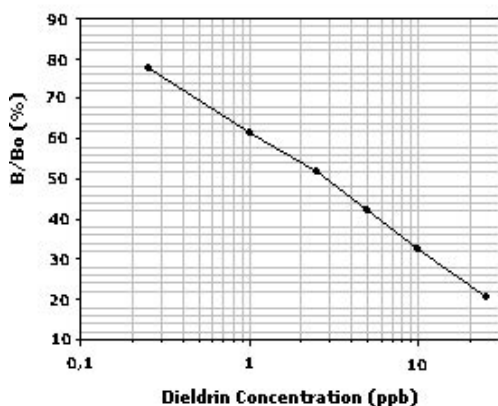
**Total time** for measurement is less than 2 hours.

**The antibody binds cyclodienes** compounds (aldrin, dieldrin, endosulfan, heptachlor, chlordane, toxaphene) and does not cross-react with other non-related agricultural compounds.

### Chemical structure (Dieldrin)



Cyclodienes are chlorinated insecticides that have been used widely for controlling soil insects. Aldrin, which readily breaks down to dieldrin in living systems is used to control soil pests (termites) on corn and potato crops. Dieldrin is used on fruit, soil, seeds and has been used to control vectors of tropical diseases. Aldrin and dieldrin have been banned in most industrialized countries but it's still used in some. Cyclodienes are environmentally stable and are not metabolized very rapidly by animals, they're deposited and stored in fatty tissue, therefore, there's the potential for bioaccumulation in food chains. This ELISA test kit detects dieldrin and related cyclodiene insecticides in environment samples at the ppb levels.



### Dieldrin Standard Curve

Samples containing Dieldrin within the dynamic range (0.25-25 ppb) can be directly tested in the assay after filtration (if necessary).

### Kit Format

Microtiter plate format, 96 wells.

Distributed in Europe by  
Biosense Laboratories AS

Kit manufactured by  
Abraxis LLC

[www.biosense.com](http://www.biosense.com)

Biosense Laboratories AS, Thormøhlensgt. 55, N-5008 Bergen, Norway  
Phone: +47 55543966, Fax: +47 55543771, e-mail: [biosense@biosense.no](mailto:biosense@biosense.no)