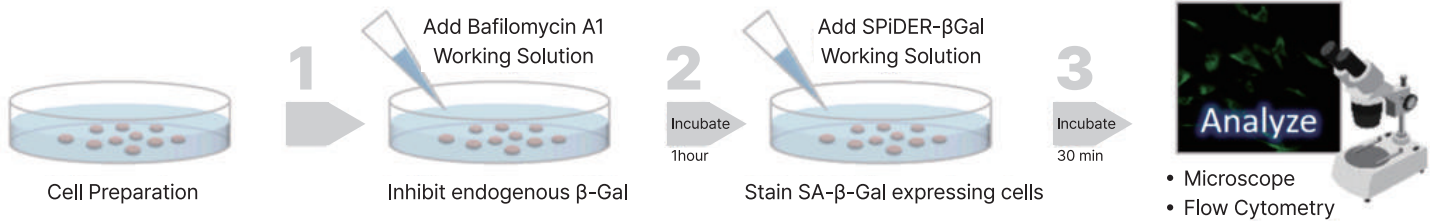
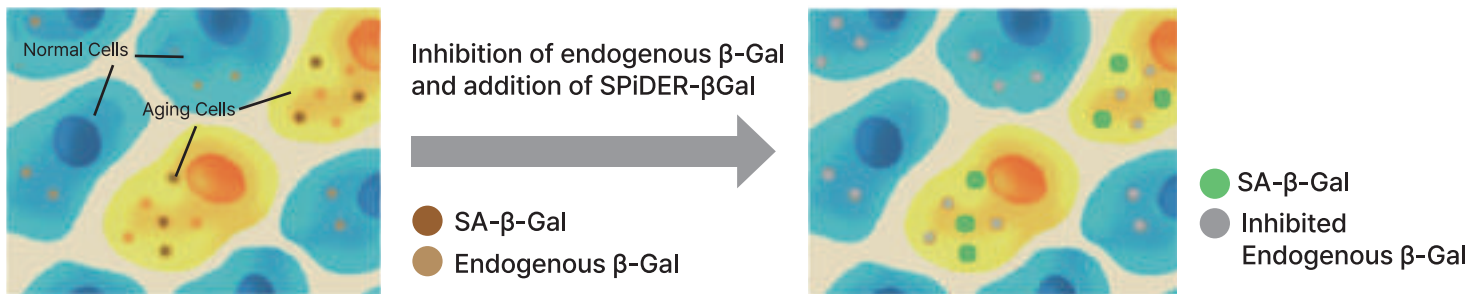


# Senescence Detection\_Kit

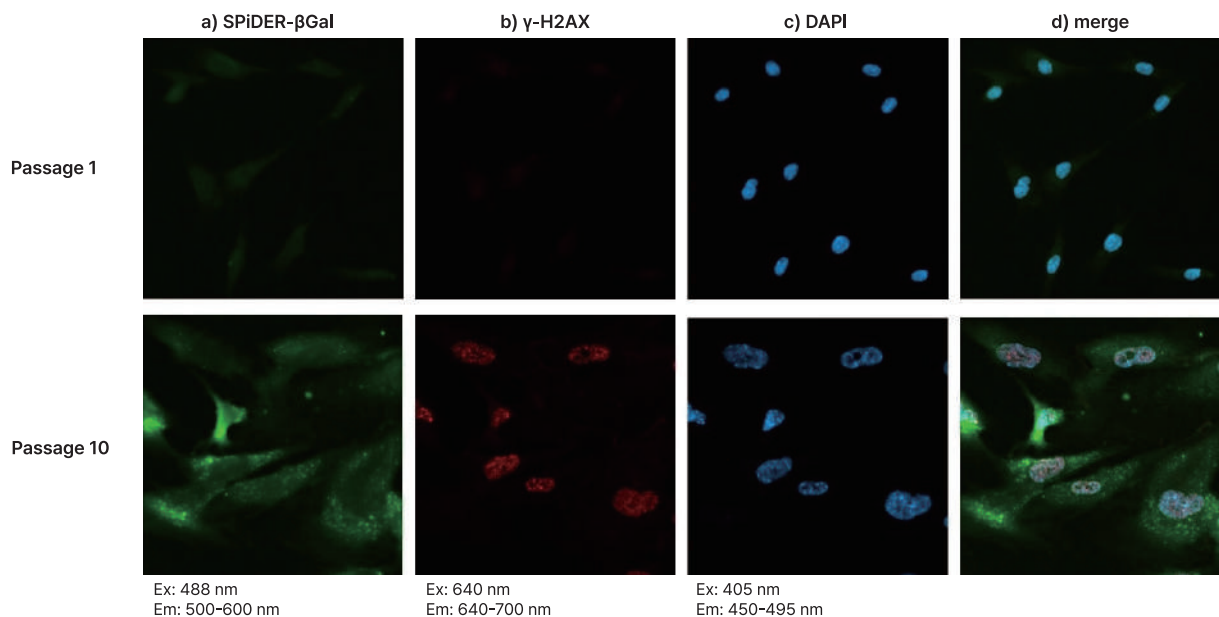


## ① Not Endogenous, Only SA- $\beta$ -Gal!



\* Bafilomycin A1 처리를 통한 Endogenous  $\beta$ -Gal을 억제하여, SA(Senescence Associated)- $\beta$ -Gal만을 검출!

## ② See The Data!

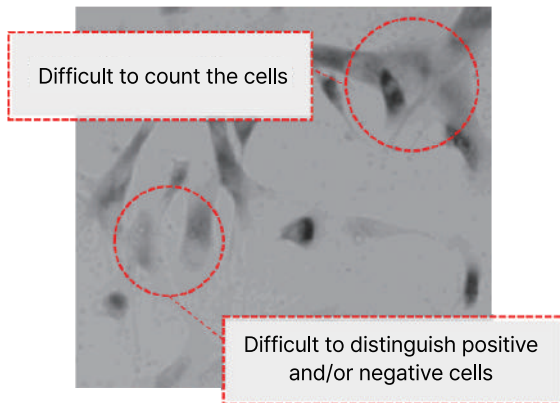


\* WI-38 cells의 passage 1과 passage 10 stained.

### ③ Easy Detection

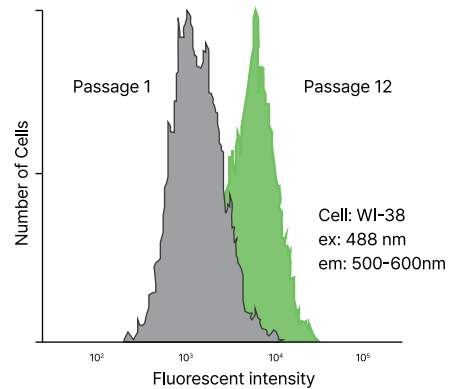
#### X-Gal Method

Detection Method: Microscope



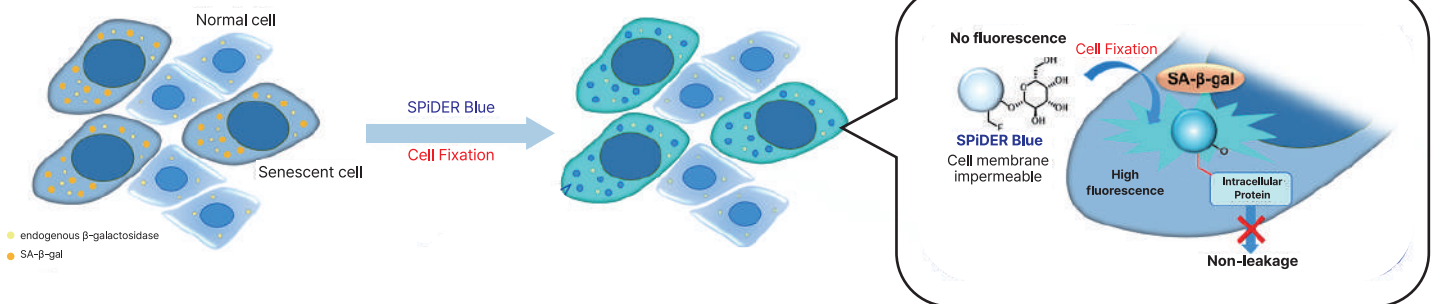
#### Dojindo's SG03

Detection Method: Microscope, Flow Cytometry



- Cell 수 측정 및 positive/negative 구분이 쉬움
- Flow Cytometry로 정량 가능

### ④ Do you want Blue? – Only Fixed Cells (Cat# SG07)



### ⑤ Summary

Products name	Feature	Living cell	Fixed cell	Detection methods	Wavelengths
<b>SPiDER Blue - Cat# SG07</b>	Immunostaining을 통한 multiple staining 가능	-	✓	<ul style="list-style-type: none"> <li>• Micro Scope</li> <li>• FCM</li> <li>• Plate Reader</li> </ul>	Ex=350-450 nm Em=400-500 nm
<b>SPiDER-<math>\beta</math>Gal Cat# SG03</b>	Live cells, Fixed cells 모두 가능	✓	✓	<ul style="list-style-type: none"> <li>• Micro scope</li> <li>• FCM</li> </ul>	Ex=500-540 nm Em=530-570 nm
<b>SPiDER-<math>\beta</math>Gal - Plate Type Cat# SG05</b>	Live cells 가능 (Fixed cells는 샘플에 따라)	✓	-	<ul style="list-style-type: none"> <li>• Plate Reader</li> </ul>	Ex=500-540 nm Em=530-570 nm