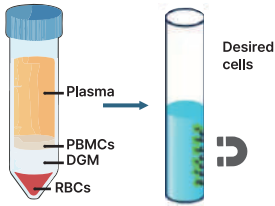


• 고품질에서 면역세포의 생존 전략 •

# Chemokine research

## 1 Human(PBMC) immune cell isolation kit - MagCelect

- 결합력 높은 자성 비드 사용으로 column 없이도 짧은 시간 내 높은 순도의(80~97%) 세포 분리
- Magnetic memory가 없어 비드에 의한 세포 손상을 유발하지 않음

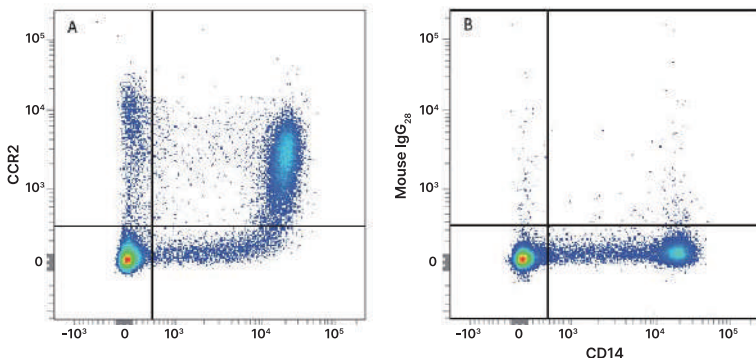


Cat#	Human isolation kit
MAGH101	CD3+ T cell
MAGH102	CD4+ T Cell
MAGH103	B Cell
MAGH104	CD4+ CD25+ Regulatory T Cell
MAGH105	CD14+ Cell

Cat#	Human isolation kit
MAGH109	NK Cell
MAGH112	CD8+ T Cell
MAGH115	Naive CD4+ T Cell
MAGH116	Memory CD4+ T Cell
MAG997	MagCelect Magnet

## 2 Human chemokine receptor antibody product list for Flow cytometry

- 12종 이상의 형광 접합 chemokine receptor antibodies
- 경제적인 size: 25 tests 부터 100 tests 까지



Detection of CCR2 in Human PBMCs by Flow Cytometry.  
 CD14 APC mAb (Cat # FAB3832A) - A. CCR2 PE mAb (Cat # FAB151P)  
 B. IgG2B PE (Cat # IC0041P) 동형 대조군

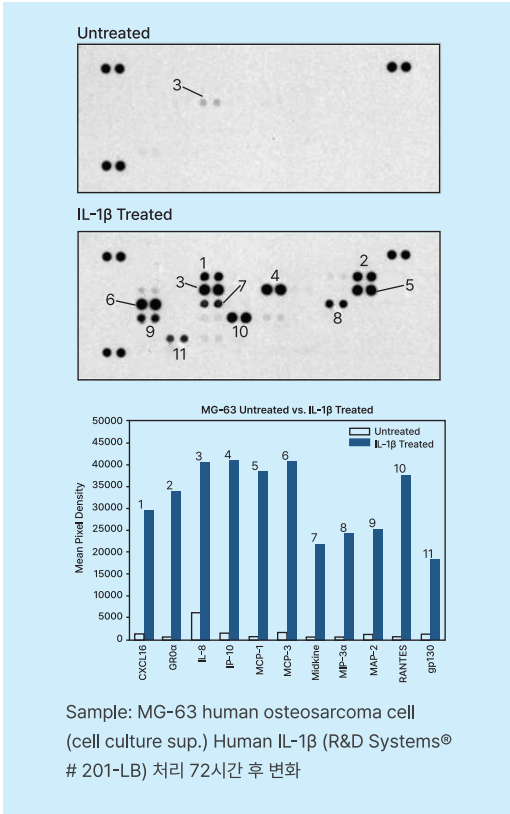
Antibodies Conjugated to Fluorophores	
UV 360nm	Alexa Fluor®350
Violet 405nm	Alexa Fluor®405
Blue 488nm	PerCP
	Fluorescein (FITC)
	Alexa Fluor®488
	Phycoerythrin (PE)
Yellow Green 561nm	Alexa Fluor®594
	Phycoerythrin (PE)
Red 633nm	Alexa Fluor®647
	Alexa Fluor®700
	Alexa Fluor®750
	Allophycocyanin (APC)

Target	Cat#	Fluorophore
CCR1	FAB145	PE/Alexa (A,B,C,D,E,F,G)
CCR2	FAB150	Alexa (A,B,C,D,E,F,G)
CCR3	FAB155	PE/APC/PerCP/FITC/Alexa (A,B,C,D,E,G)
CCR4	FAB1567	PE/APC/PerCP/FITC/Alexa (A,B,C,D,E,F,G)
CCR5	FAB182	PE/FITC/Alexa (A,B,C,D,E,F,G)
CCR6	FAB195	PE/APC/PerCP/Alexa (A,B,C,D,E,F,G)
CCR7	FAB197	PE/Biotin/APC/FITC/Alexa (A,B,C,D,E,F,G)
CCR8	FAB1429	PE/APC/PerCP/Alexa (A,B,C,D,E,F,G)
CCR9	FAB179	PE/APC/FITC/Alexa (A,B,C,D,E,F,G)
CCR10	FAB3478	PE/APC/Alexa (A,B,C,D,E,F,G)

Target	Cat#	Fluorophore
CCR11	FAB6899	PE/Alexa (A,B,C,D,E,F,G)
CXCR1	FAB330	PE/FITC/Alexa (A,B,C,D,E,F,G)
CXCR2	FAB331	PE/APC/FITC/Alexa (A,B,C,D,E,F,G)
CXCR3	FAB160	PE/APC/FITC/Alexa (A,B,C,D,E,F,G)
CXCR4	FAB170	PE/Biotin/APC/FITC/Alexa (A,B,C,D,E,F,G)
CXCR5	FAB190	PE/APC/PerCP/FITC/Alexa (A,B,C,D,E,F,G)
CXCR6	FAB699	PE/APC/Alexa (A,B,C,D,E,F,G)
CXCR7	FAB4227	PE/APC/Alexa (A,B,C,D,E,F,G)
CX3CR1	FAB5204	PE
XCR1	FAB857	PE/Alexa (A,B,C,D,E,F,G)

Alexa fluorochrome key guide: A 350, B 405, C 488, D 594, E 647, F 700, G 750

### 3 Human chemokine Proteome Profiler™ antibody arrays (Catalog # ARY017)

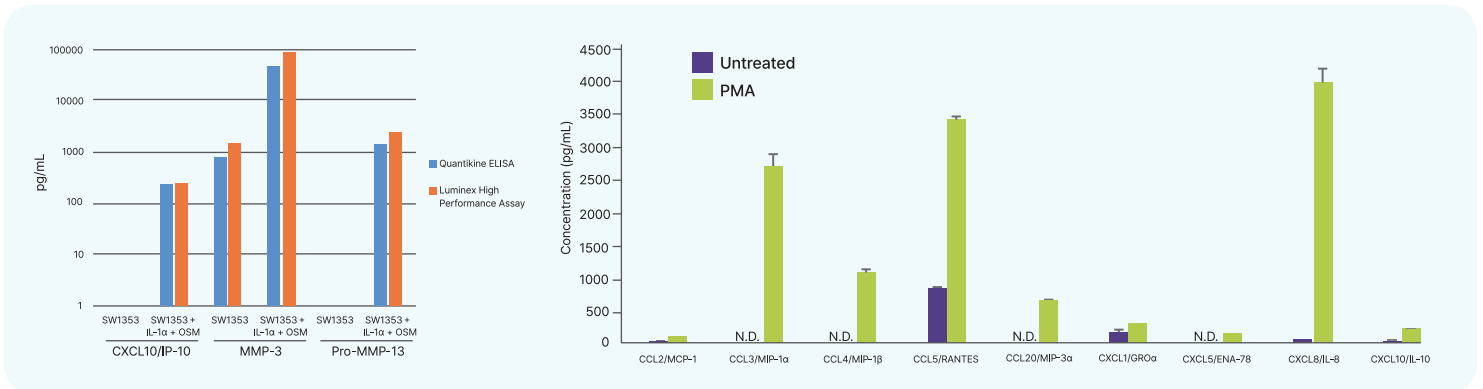


- 31가지의 chemokine을 한 번의 실험으로 확인
- Western blot 장비(Gel Doc, X-ray film) 만으로 결과 도출
- 응비 분석 서비스 의뢰 가능

CCL1/I-309	CCL21/6CKine	CXCL8/IL-8
CCL2/MCP-1	CCL22/MDC	CXCL9/MIG
CCL3/CCL4	CCL26/Eotaxin-3	CXCL10/IP-10
CCL5/RANTES	CCL28	CXCL11/I-TAC
CCL7/MCP-3	Chemerin	CXCL12/SDF-1
CCL14/HCC-1/HCC-3	CX3CL1/Fractalkine	CXCL16
CCL15/MIP-1 delta/LKN-1	CXCL1/GRO alpha	CXCL17/VCC-1
CCL17/TARC	CXCL4/PF4	IL-16
CCL18/PARC	CXCL5/ENA-78	Midkine
CCL19/MIP-3 beta	CXCL7/NAP-2	XCL1/Lymphotoxin
CCL20/MIP-3 alpha		

### 4 Chemokine Luminex screening and performance assays

- Bead based multiplex
- 50  $\mu$ l sample volume 만으로도 다양한 종류의 단백질 정량 가능
- Quantikine ELISA와의 높은 correlation
- 응비 분석 서비스 의뢰 가능



#### Human Luminex Discovery Assay (Catalog # LXSAHM)

CCL1/I-309/TCA-3, CCL2/JE/MCP-1, CCL3MIP-1 $\alpha$ , CCL4/MIP-1 $\beta$ , CCL5/RANTES, CCL7/MCP-3/MARC, CCL8/MCP-2, CCL11/Eotaxin, CCL13/MCP-4, CCL14/HCC-1/HCC-3, CCL15/MIP-1 delta, CCL17/TARC, CCL18/PARC, CCL19/MIP-3 beta, CCL20/MIP-3 $\alpha$ , CCL21/6CKine, CCL22/MDC, CCL23/MPIF-1, CCL24/Eotaxin-2/MPIF-2, CCL25/TECK, CCL26/Eotaxin-3, CCL27/CTACK, CCL28, CX3CL1/Fractalkine, CXCL1/GRO alpha/KC/CINC-1, CXCL2/GRO beta/MIP-2/CINC-3, CXCL4/PF4, CXCL5/ENA-78, CXCL6/GCP-2, CXCL7/NAP-2, CXCL8/IL-8, CXCL9/MIG, CXCL10/IP-10, CXCL11/I-TAC, CXCL12/SDF-1, alphaCXCL13/BLC/BCA-1, CXCL14/BRAK, CXCL16 etc.

#### Human Cytokine Panel A Luminex Performance Assay Analyte (Catalog # FCSTM03) – 22종

CCL2/MCP-1, CCL3/MIP-1 $\alpha$ , CCL4/MIP-1 $\beta$ , CCL5/RANTES, CXCL5/ENA-78, CXCL8/IL-8, FGF basic, G-CSF, GM-CSF, IFN- $\gamma$ , IL-1 $\alpha$ /IL-1F1, IL-1 $\beta$ /IL-1F2, IL-1ra/IL-1F3, IL-2, IL-4, IL-5, IL-6, IL-10, IL-17, TNF- $\alpha$ , Thrombopoietin/Tpo, VEGF